

Tractors, Trailers, Farm &
Shop Tools, Misc.
Equipment, Fencing, Lawn
& Garden Items

Auction

pfeifer brothers



auctioneers



Saturday, September 16th, 2023; 10:00 a.m.

Seller: Weber Brothers Rev. Farm Trust & Ron Weber

Sale Location: 978 Emmeram Rd, Hays, KS

Directions: From I-70/Yocemento Exit 153, North 2 Miles to Emmeram Rd, West 1/4 mile to Sale Site.

Auction Company are agents of the sellers and are not responsible for accidents or theft. No guarantees or warranties will be expressed or implied. This is only a PARTIAL LISTING. We expect there to be several trailers of miscellaneous merchandise. Lunch will be available. More photos will be available on our website. www.pfeiferbrothersauction.com OR www.farmlandauction.com Terms of sale are Cash, "Checks, Debit/Credit Cards.

TRACTORS & TRAILERS:

Sells at 12:00pm

- Cub Cadet 8454 SS 4WD Tractor** w/loader, 3pt, diesel, shuttle shift, 471hrs, Quick Hitch, PTO, SN: 322700363
- New Holland LB75.B loader/Back-hoe,** SN: 031047409
- Case 930 Tractor/loader,** 2 hydr., 3pt, PTO, 18.4-34 Rear Tires, SN: 8267295
- McCormick Deering Tractor** (Does not run)
- Twin MM City Tractor** (Does not run)
- International W-6** (Does not run)
- 1987 International S1600 Dump Truck** 8' Box, VIN: 1HTLAHGM4HH466841
- 1949 International KB-5 Grain Truck** (Does not run)
- Barber Green Tractor** (Does no run)
- 1994 Big Tex 20'x 8' w/ 5' dove tail,** 2 ramps, with title
- Shop Built Carrier Trailer,** triple axel 64" x 25', no title

MISC EQUIPMENT & MOWERS:

- John Deere STX 38" Mower**
- (2) John Deere self-propel push mowers**
- John Deere 111 Mower**
- Jacobsen 3-wheeler**
- Poulon Pro Push Mower**
- Cub Cadet walk behind trimmer**
- Case 12' Disc, 19" Discs**
- Bx66 Box Scraper 5 1/2'**
- Rhino SE6 Mower**
- 3pt Tractor Sprayer, Shaben sprayer, 7' Disc, chisel, Sickle Mower**
- (3) 3pt post-hole diggers & 8", 10", 12" augers**
- Pallet Forks 42" & Bucket 6'**
- Implement Hitch**
- Dozer Blade & Backhoe Bucket**
- Tires (9.00-20 Tires & Rims, 9.00-20 Tires (New), 16" 8 Bolt Tire/Rim, Implement Tires**
- Aluminum Tilt-A-Rack**

SHOP TOOLS, LAWN & GARDEN:

- Coleman Powermate 4000W Generator**
- Rockwell 36" table saw**
- Power Craft 180A Welder, Welding Shop Table, Cables & Leads**
- Oxy/Acet Cutting Torch**
- Hitch Pins, Pintle Hitch, Receiver Hitch, Hitch Cargo Carrier**
- Battery Chargers**
- Miter Saw & Radial Arm Saw**
- Air Compressor & Parts Washer**
- Transfer pump (NIB)**
- Hi-lift Jack & Lawn Mower jack**
- Winch & Chain Hoist, Log Chains & Boomers**
- Engine Stand & Rolling Cart**
- Power Tools (Craftsman & Porter Cable** Circ Saws, Drills, 4 1/2" Angle Grinder, Bench Grinder
- Bosh Rotary Hammer**
- Hand Tools (Brace-bits, Nail Puller, Fencing Pliers, Vice Grips, Screw Drivers, Pipe wrenches, Adj. Wrenches (24", 12", 18"), Hammers, Shop Vise**
- Concrete Tools, form stakes, Concrete Rake & Concrete Tools**
- Lawn & Garden (Rakes, Shovels, Brooms, Pitchfork, Potato forks, Wrecking bar, Silage Fork, Leaf Blower, Weedeater, Wheelbarrows & Yard Roller, Roto Tiller, New Lawn Sprinklers, Garden Plow, Weed Burner**
- LP Bottles (5lb, (4) 100lb, (2) 40lb bottles)**
- 250,000 BTU Propane Heater**
- ATV & Backpack Sprayer**
- Alum., Wood & Fiberglass Ladders**

FENCING, LUMBER & MISC.:

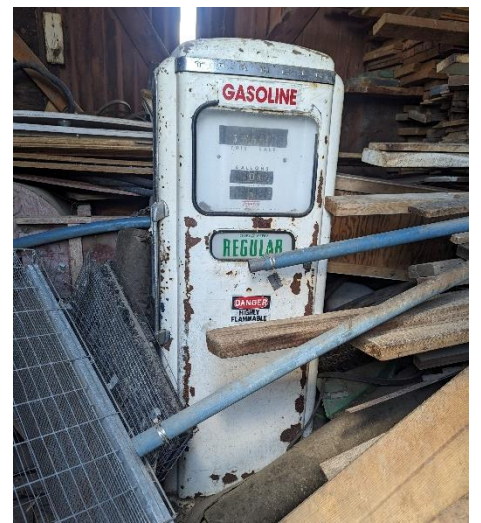
- Fencing Supplies (Creosote Posts, Corner Posts, Line Posts, New & Used T-posts, Rolls of Barb Wire), Fence Stretcher, Post Driver**
- Misc. Lumber, 1x's, 2x6, 2x4, 2x8, 4x4, Barn Siding (Lg Quantity)**
- 50' 50amp RV cord**
- Storage Lockers**
- Oils & Lubricants, Nuts/Bolts**
- Pressure Tank**
- Flathead 6cyl Engine & Auger Motor**
- Misc Pipe, Tubing, Iron, Salvage Iron**
- Pallet Rack 2 sections 6 legs 8 cross bars**
- Angle Iron 11" x 12" x 9'**
- Angle Iron 11" x 12" x 10'**
- Angle Iron (10)6"x6"x14', (15)3"x3"x20'**
- Sq Tubing (16)6"x6"x10', (7)6"x6"x20'**
- I-beam 20' x 6" (19)**
- I-beam 20' x 12" (multiple)**
- Pipe 4" ID x 20' (16)**
- Pipe 6" ID x 20' (3)**
- Massey Harris Super 92 (Salvage)**
- Massey Combines (Salvage)**
- Wood Shipping Containers**

ANTIQUE FURNITURE:

- Hoosier Cabinet**
- Cane back Chairs**
- Oak Pedestal Table**
- Treadle Sewing Machine**
- Wooden Highchair**
- Waterfall Desk, Dresser, Chest of Drawers, Vanity Dresser/Mirror**
- Oak Dresser & Parlor Table**
- Ice Box & Wash Cabinet**
- Tube Radio**

ANTIQUES & COLLECTIBLES:

- 1931 Chevy 5-window Coupe** (unrestored)
- Tokheim Gas Pump**
- Horse Drawn wooden wagon**
- Wagon Buggy Seat**
- Ammo Cans, Egg Baskets, Oil Lanterns, Coal Bucket & Copper Boiler, Blow Torches, Jugs, Galvanized Bathtub, Tubs, Pepsi Crate & Wooden Keg Fina & Conoco Cans, Buck Saw, Ice Tongs, Old Sign, Weathervane**
- Ringer Washer, Cocks & Cream Cans**
- Trumpet & Violins**
- 1930's License Plates**
- Seed Cleaner**
- .22 LR Bolt Action Rifle, BB Gun**



Farmland Auction & Realty Co., Inc
1390 E. 8th, Unit A
Hays, KS 67601
farmland@farmlandauction.com
785-628-2851

Pfeifer Brothers, Auctioneers
4312 180th Street
Russell, KS 67665
pfeiferauction@gmail.com
785-483-1805



Jason Pfeifer: 785-483-1805
R/E Licensed Broker/Auctioneer
Beth Pfeifer, Auction Clerk

Brandon Pfeifer: 785-650-7588
Auctioneer
Chandra Pfeifer, Auction Cashier

Roger Legleiter: 785-623-8717
R/E Licensed Sales/Auctioneer
Kalli Pfeifer, Farmland Admin. Staff